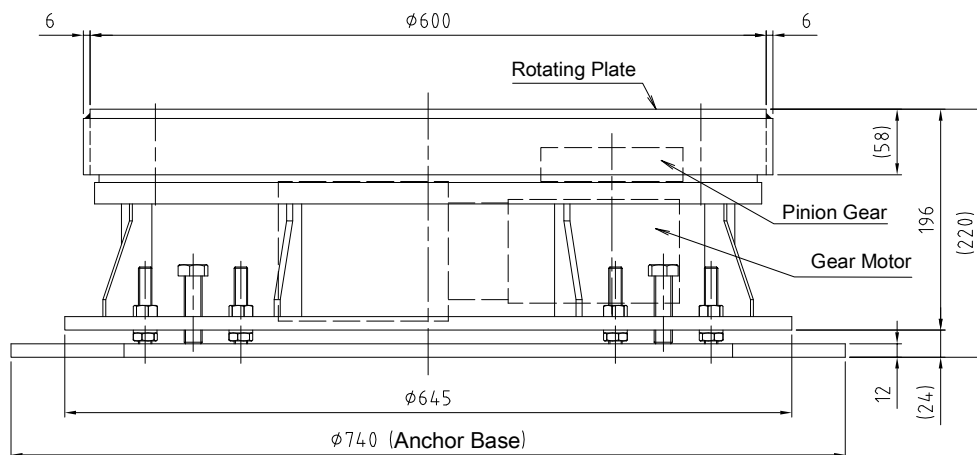


Control panel for Turn Table
(Standard Motor wire length: 5m)



ISB-S-06H Standard Type

Turn Table Size	Outer diameter	φ 600mm (Carring Surface)
	Height	220mm
Movable load		3000kg
Motions	Turning Direction	Clockwise and Anti-clockwise Rotation
	Rotation Speed	1 ~ 7 r.p.m.
Geared motor for drive (without break)		0.4kW Reduction Rotation 1/160 3P AC200V
Surface Finishing		Standard color Giotto blue
Device weight		180kg