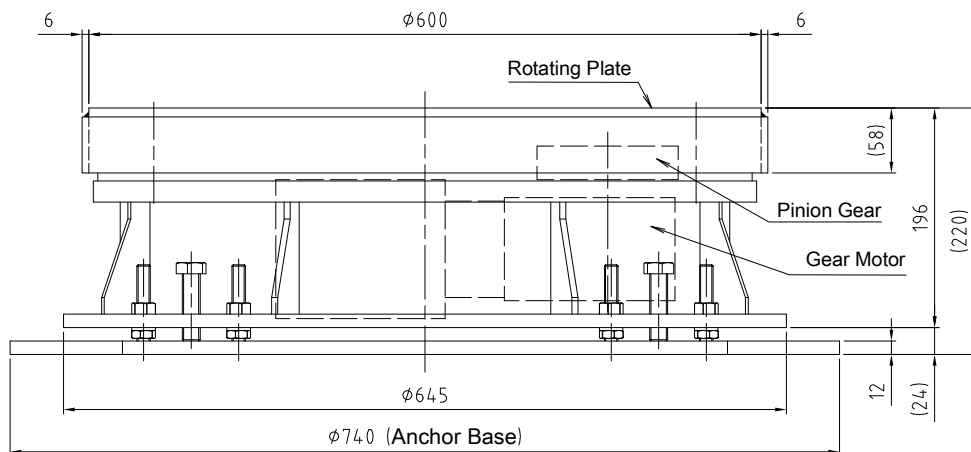


Control panel for Turn Table
(Standard Motor wire length: 5m)



ISB-S-06 Standard Type

Turn Table Size	Outer diameter	φ 600mm (Carring Surface)
	Height	220mm
Movable load		3000kg
Motions	Turning Direction	Clockwise and Anti-clockwise Rotation
	Rotation Speed	0.5~3.5 r.p.m.
Geared motor for drive (without break)		0.2kW Reduction Rotation1/120 3P AC200V
Surface Finishing		Standard color Giotto blue
Device weight		178kg